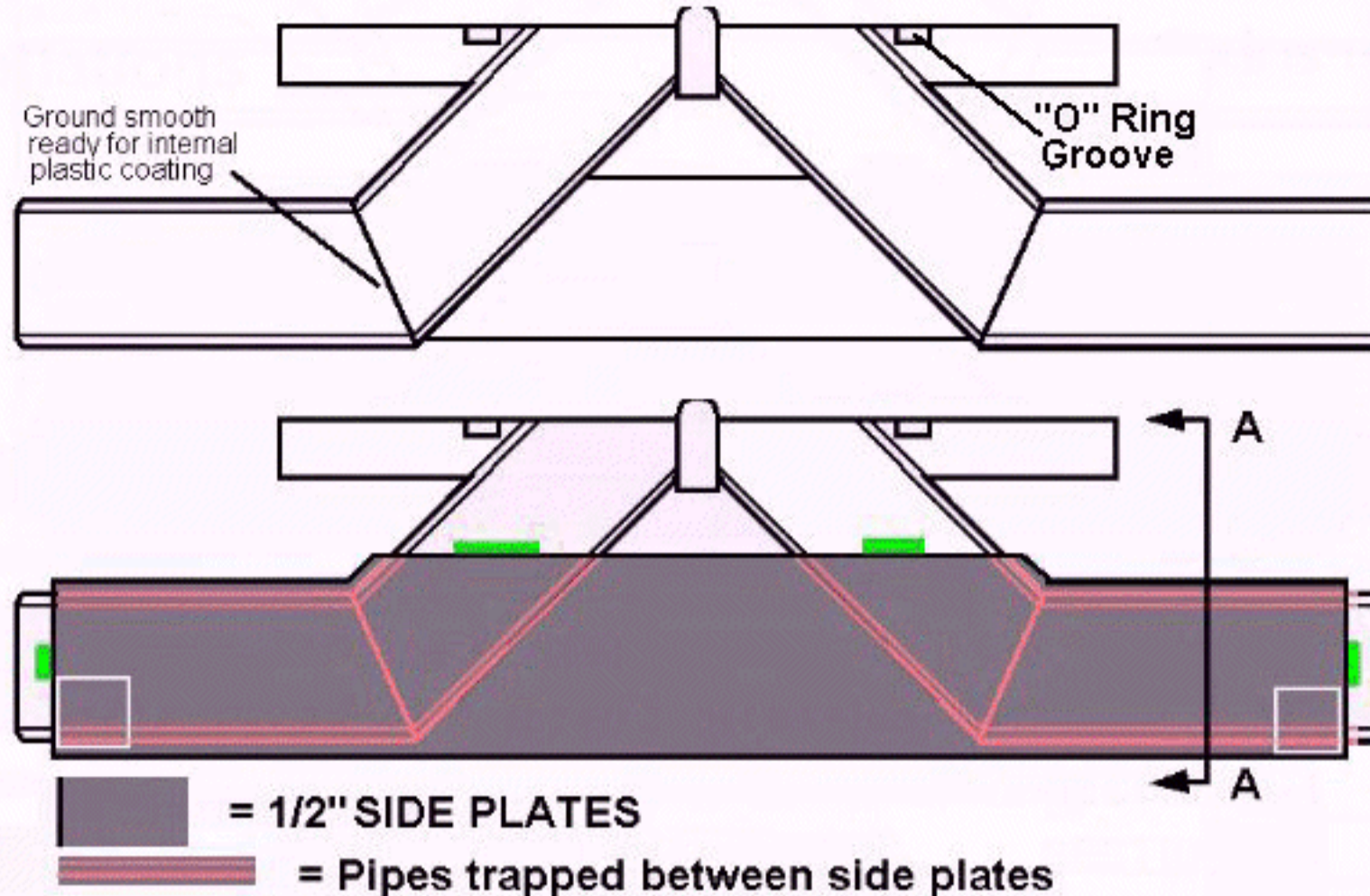




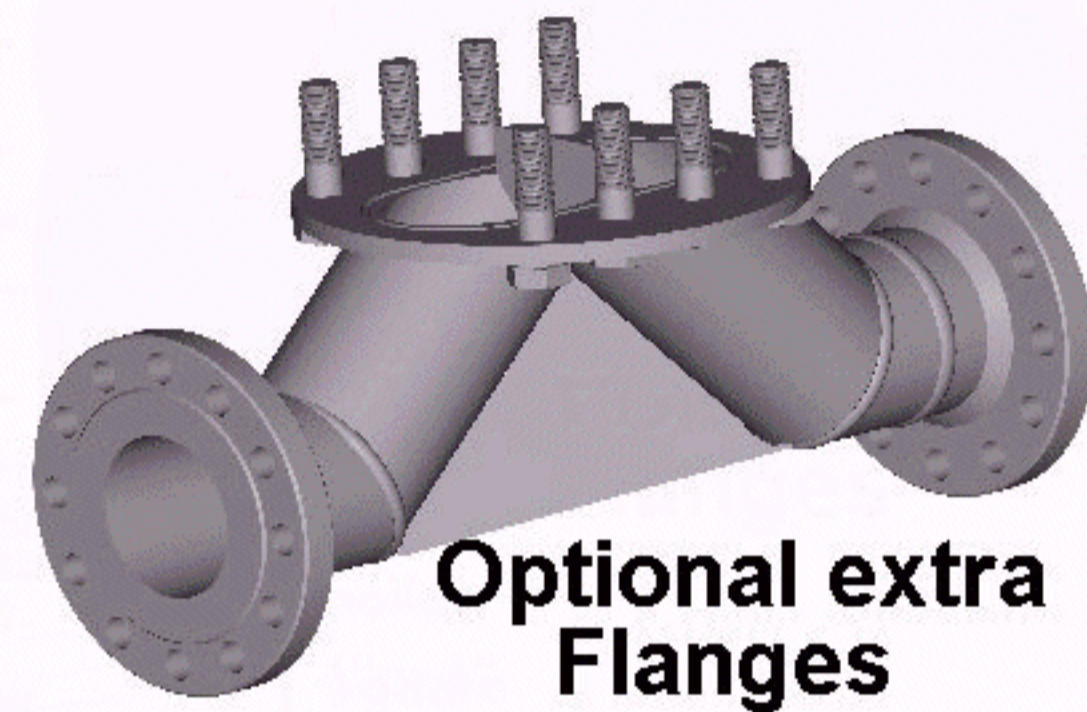
Piping Bases for SurgeGuards - with options

For SURGEGUARD
Interceptor
Installations



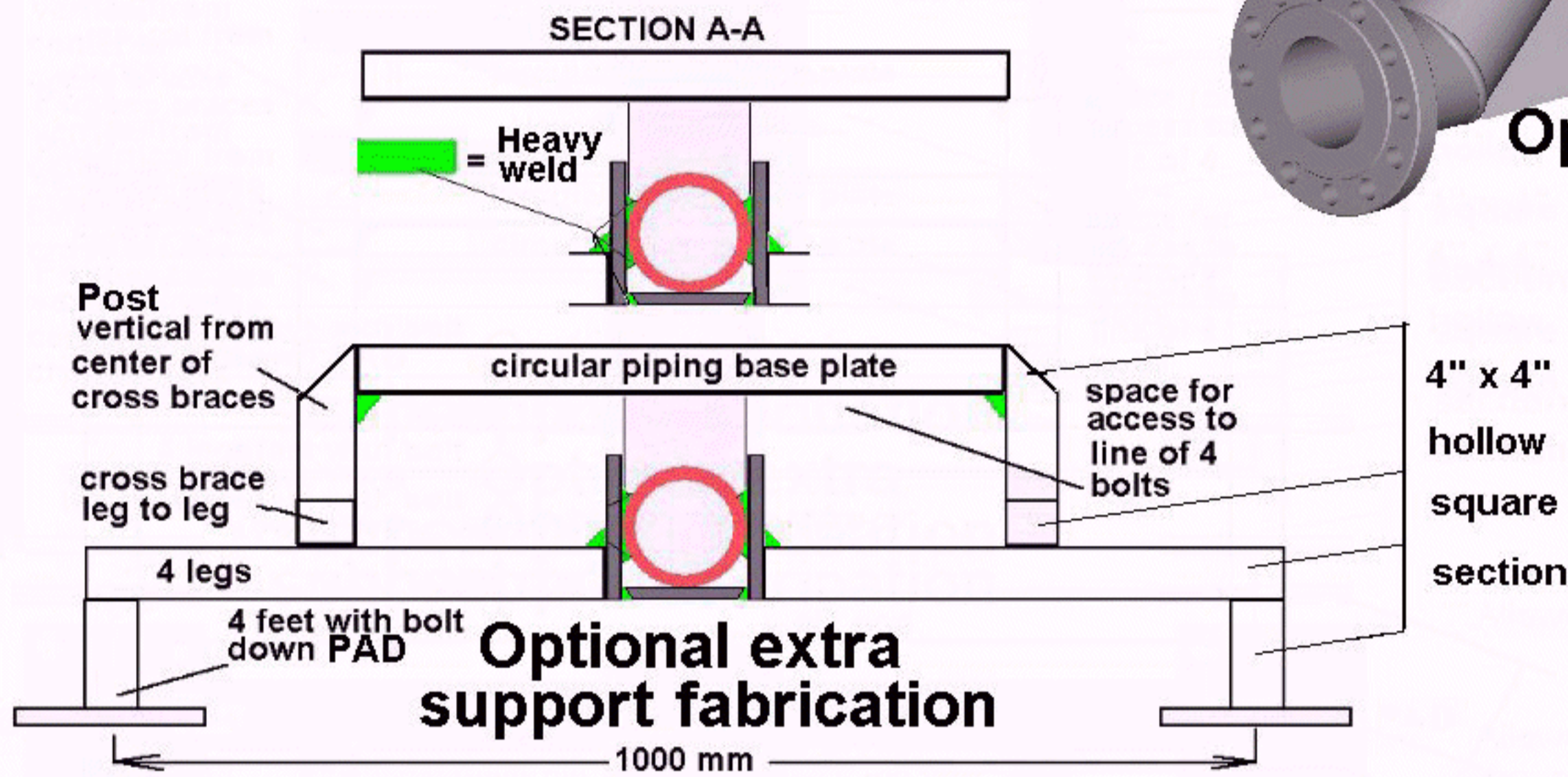
Piping bases are made for permanently welding into the system. Shown here with 4 leg mounting.

Where internal coating is required, they may require the addition of flanges as below.

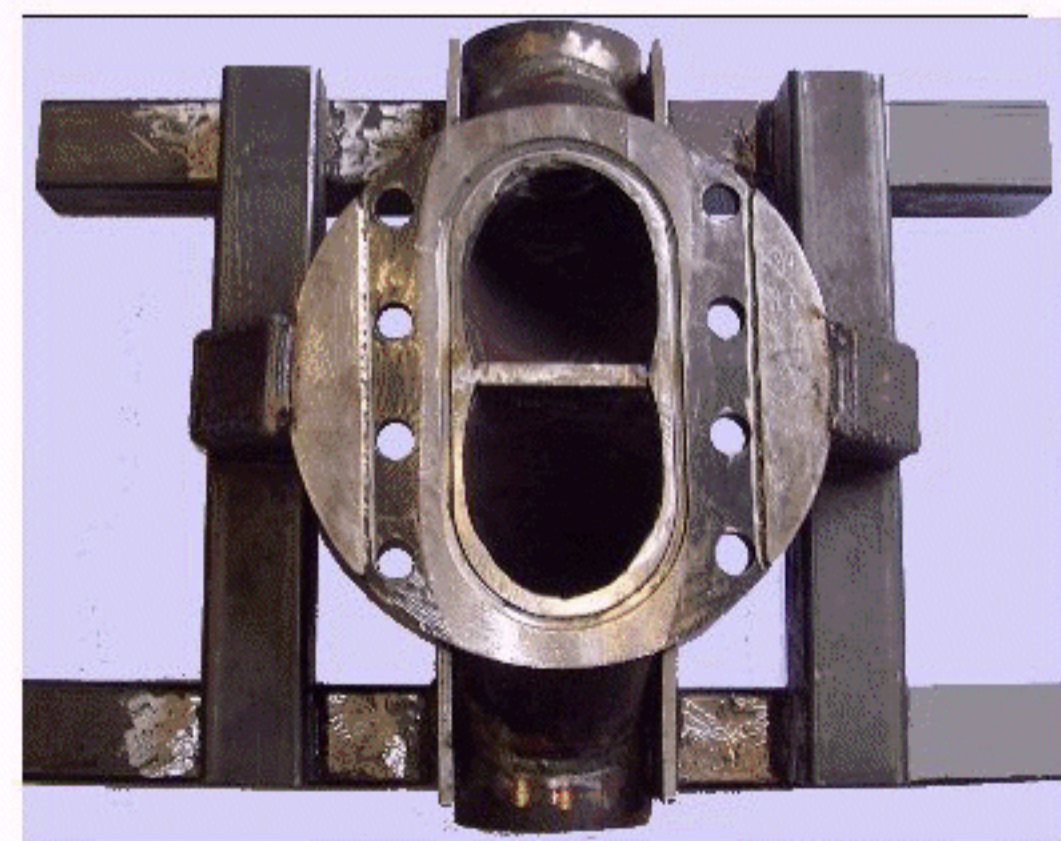
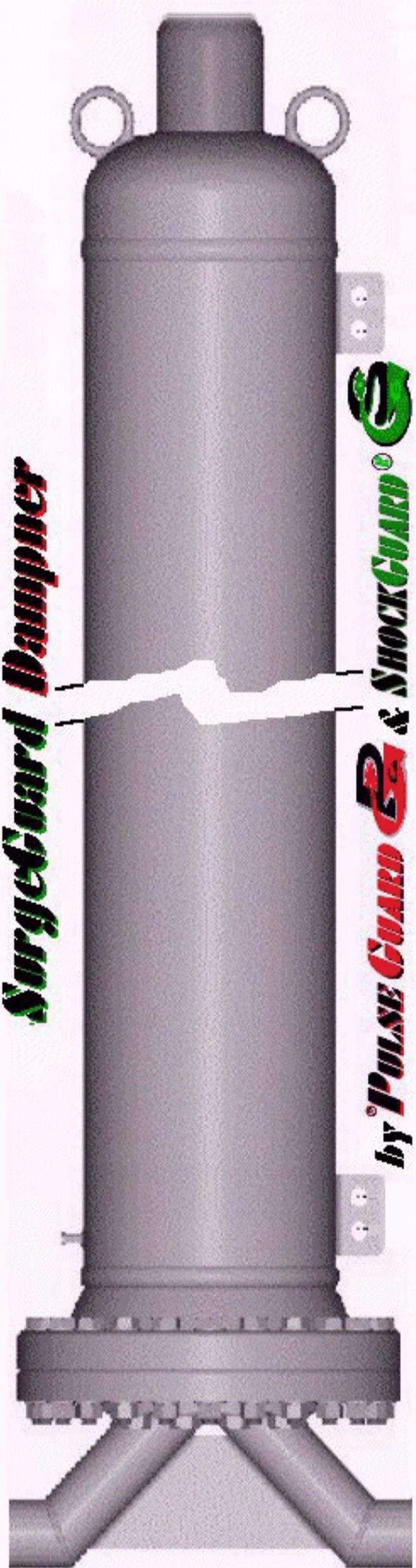


Optional extra Flanges

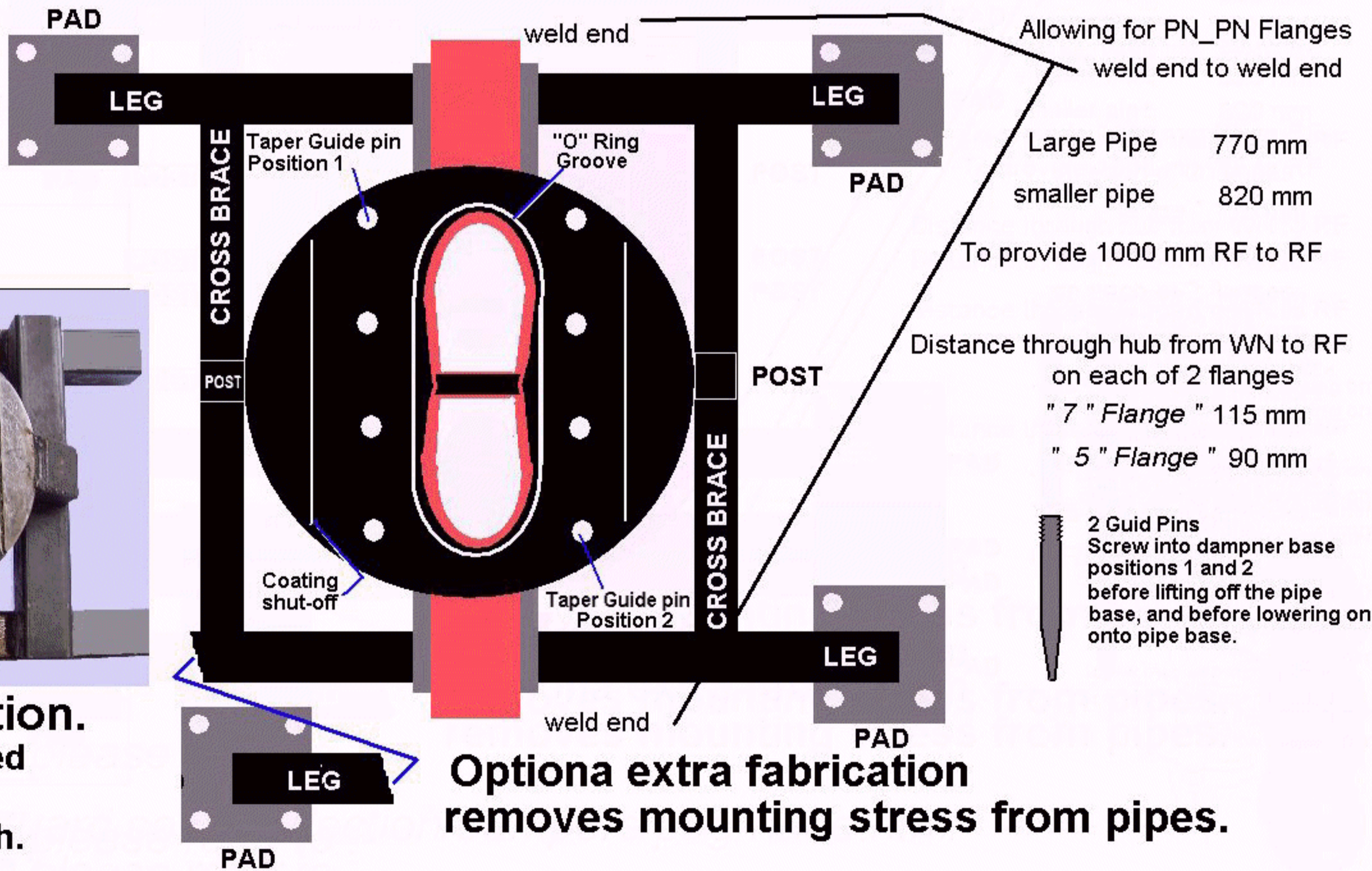
For Nozzle load stress limitation



Optional extra support fabrication



Support Fabrication.
For legs to be added
To set flange height
above concrete plinth.



Allowing for PN_PN Flanges
weld end to weld end

Large Pipe 770 mm
smaller pipe 820 mm

To provide 1000 mm RF to RF

Distance through hub from WN to RF
on each of 2 flanges
" 7 " Flange " 115 mm
" 5 " Flange " 90 mm

2 Guid Pins
Screw into damper base
positions 1 and 2
before lifting off the pipe
base, and before lowering on
onto pipe base.

Optional extra fabrication
removes mounting stress from pipes.

For volume selection and dimensions please refer to :-
<http://www.pulseguard.co.uk/selection/dampers/peg-huge.html>

For drawing, please refer to :-

<http://www.Liquid-dynamics.co.za/za/sug-pulse+shock-intercepter.pdf>

